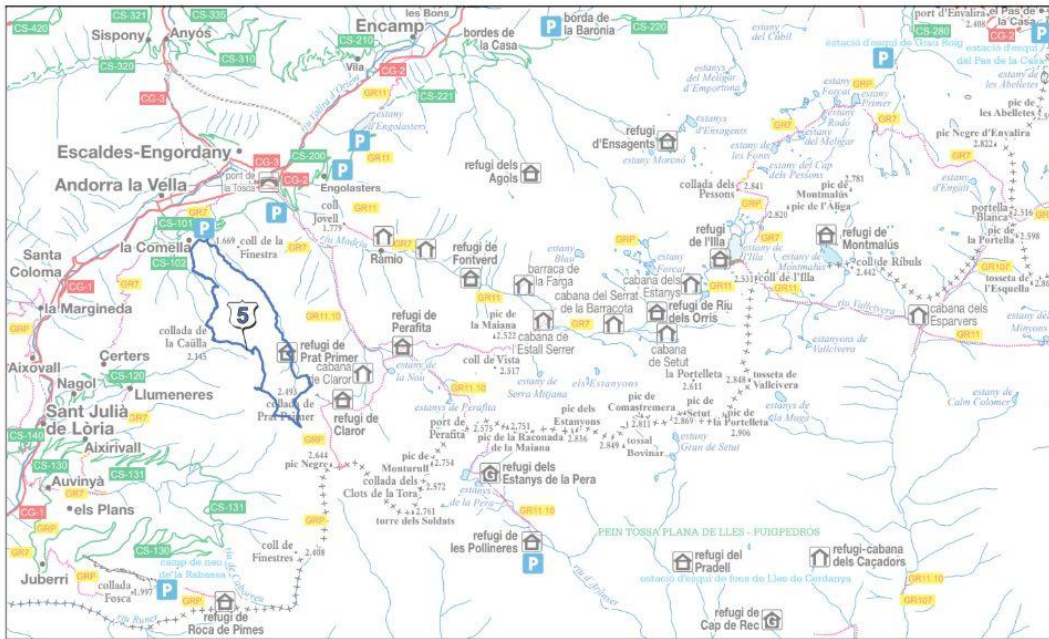


5 Prat primer i calm de Claror



PRAT PRIMER and CALM DE CLAROR (CIRCULAR)



Starting point: Parking de La Comella



Difficulty: More difficulty



Distance: 11.41 kilometers



Drop: 1.242 meters



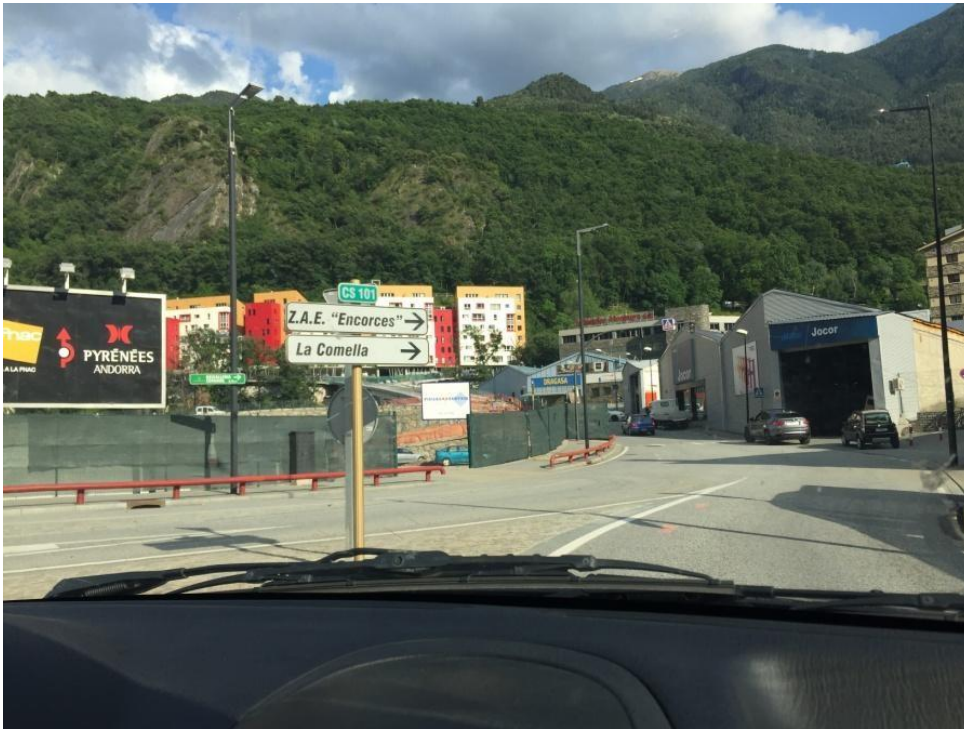
Maximum altitude: 2.604 meters



Minimum altitude: 1.362 meters

HOW TO ARRIVE BY CAR

We are located on the CS101 road towards La Comella. Once past the roundabout, about 4 km, is the picnic area and then, on the right, we see a road sign with no exit. We turn and find a parking area and access to the valley. From here comes the road that goes up to Prat Primer on the Riguer.



INTEREST POINTS

- 1 Prat Primer path
- 2 Prat Primer refuge
- 3 Collada de Prat Primer
- 4 Calm de Claror